



CCC NEWS

The Creative Camera Club | Lexington, KY. | A Proud Member of LexArts CCC News

√ Important Reminders

October 17

Competition Candid People Critique - Terry Bailey
MSS Nancy Bonhaus, Gui Silva, and Cindy Fogg
Elections

November 5

Board Meeting
Bronte Bistro at Joseph-Beth
6:30 PM All Welcome

November 9

10: AM - Noon
Turn in prints
Lexington Arts and Science Center

November 14

Judging and Clubs Choice
Come at 6:30 for Club's Choice

November 15

Gallery Hop
Bring lots of food.

December 17

Christmas Party
Fasig Tpton
Meetings at Crestwood Church
1882 Bellefonte Dr, Lexington

Inside this Issue

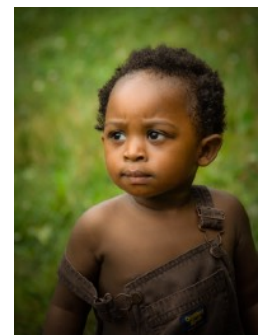
Terry Bailey	1
Print Completion Rules	2-4
2020 Topic Definitions	3
Three O Classes	5
2019 Calendar	5
2019 List of Officers	5

Terry Bailey to Critique Candid



Our own Terry Bailey will be giving the critique on the candid competition. One of her favorite things to shoot is what she call "Characters". Her images tell the story of the people without them speaking. She has won numerous awards for her captivating photos.

Terry majored in art in college and love to edit in Lightroom and Photoshop. She said " It lets me express myself like I did with brush and canvas.



Print Competition Change:

LASC can not accept prints valued at \$500. or more. A link to the labels will be sent out to you from Parham.

Competition Topics

**2019 dues must be paid in order to be eligible for Creative Camera Club Competitions. Entry must fit topi*

Candid People (October)

Candid people Images are those which are captured in such a way that the subjects of the image are not under the control of the photographer. Subjects MAY be aware of the camera but not reacting to it.

Competition Topics 2020

*Reflections - February
Children's Toys - April
Inclement Weather - May No
critique
Music - June No critique
Graffiti - July
Madison County - August
Fairs and Festivals -October*

Creative Camera Club

49th Annual Print Competition & Exhibition

The Living Arts & Science Center

November 13-January 3

Our Annual Print Competition & Exhibition is the most anticipated and exciting club event of the year. The club will again be exhibiting at The Living Arts & Science Center with the Gallery Hop Reception scheduled on Friday, November 15, 2019 from 5-8 p.m. It is important that exhibiting members read, understand and adhere to the exhibition rules - some of which have changed due For your reference and convenience, the rules are located below as well as on the club website.

Important Dates

November 9, 2019– Prints must be submitted at LASC between 10 a.m. and noon. No prints will be accepted after 12:00 noon. No exceptions!

November 14, 2019– Judging and CCC monthly meeting will take place at LASC. Members urged to arrive at 6:30 p.m. to cast their votes for favorites. Judges will begin critiques after members' votes have been tallied.

November 15, 2019– Gallery Hop Reception from 5-8 p.m. Members are asked to bring finger foods. CCC will provide beverages, plates, cups, etc.

All prints must remain in the exhibit for the duration of the show. Pick up prints from the exhibit between 9 a.m. – noon. Any artwork left after that date is subject to a storage fee of \$5 per day per print. Artwork not picked up within 14 days of this date will be disposed of at the discretion of LASC.

Eligibility

To participate in the Annual Print Competition & Exhibition, you must have attended at least six official club functions (meetings, field trips, workshops) **as a dues-paying member** during the calendar year leading up to the show.

Number of Entries

1. Each eligible member may enter up to four (4) prints in the show. You may enter both color and black & white entries, but no more than a total of four prints.
2. You may not enter more than three (3) entries in the same category.

Identifying your work

1. All prints must contain an identifying label on the back.
2. Labels will be supplied with the December newsletter.
3. Along with your name and phone number, you must indicate the category where the print is to be entered, and if it's to be in Color or Black & White.



Central Kentucky Computer Society

**Workshop- Getting the Most Out of
Your Camera by
Shooting in RAW.**

Monday, October 28, 10 AM-1 PM

**Composition and Elements of Design
in Photography.**

Class 6 weeks.

Starting Monday, November 4-
December 9, 1-3 PM

160 Moore Drive
Suite 107
Lexington, KY 40503
859-373-1000

**Call for Member Slideshows &
Mini- Sessions**

Do you have a slideshow of your images you would like to share with the club? The club would love to see your stuff! Or, would you like to lead a mini-session on a photo topic? The club would love to schedule 15-20 minute mini-sessions presented by members who are particularly knowledgeable about a photo topic of interest. If you are interested, please contact Parham Baker at parham@parhampbaker.com.

4. Also, please indicate the price (or NFS, if “not for sale”), the outer dimensions and where the image was taken.

5. Once your prints have been signed in, they cannot be switched out for others or moved to a different category. No exceptions!

Framing your work

1. All prints must be in simple metal frames of any color. Plastic or wood frames will not be accepted.

2. All prints must be behind glass.

3. The print may be matted in any color and the overall area of the mat (including the picture) cannot exceed 384 square inches (Example: 16x24 inches) with the longest dimension not to exceed 36 inches. There is no minimum size.

4. Frames must have a wire across the back and be ready to hang.

5. Because some of the prints will be hung from suspended wires with hooks, the wire must be 2-1/2” from the top of the frame and must be drawn tight so as to not have any slack. This is required to ensure the prints don’t “lean” out from the wall.

6. Prints should have rubber “bumpers” on the bottom corners on the back side to help them remain straight after they are hung.

7. Any entries that do not meet the criteria above will not be accepted.

Categories

“The following is a list of the categories, with definitions. “ Within each category, there is a color and a black and white division. If one division within a category fails to have at least three (3) entries, it will be merged with the other division of that category so that the color and black & white entries will be judged together.

Fauna – Any photo with animals or animal life as the primary subject. This does not include birds, since they are a different category.

Flora – Any photo with plants or plant life as the primary subject.

Still Life –An image captured in which the photographer has the ability to position and arrange the subject (which is typically inanimate items) and has control of the lighting. The ability to manipulate the appearance of the image is crucial. It should be contrasted with a found object where the photographer simply photographs a subject without the ability to position or light it.

Natural Pictorial – Natural objects must be the focal point. No evidence of man-made activities or objects shall be permitted.

Scenic: An image where a combination of both natural and man-made elements co-exist to produce a pleasing scenic image. Either can be dominant but both must be present.

Portrait– A photograph primarily of a person, especially of the face, i.e. a description, portrayal, etc., of a person(s).

Abstract – An image that does not depict objects realistically but rather in patterns or forms of lines, masses, or colors. These abstract characteristics of the image must be produced during the action of taking the photograph in- camera, and not through techniques implemented during post-processing.

Definitions for 2020 CCC Competitions

Reflections (February)

Images where the subject of the image is either wholly or in part a reflection. Images which simply include an incidental reflection should not be submitted. Consider the If the reflection were not present in the photograph would it be significantly different?

Children's Toys (April)

Images in which the subject is a child's toy.

Inclement Weather (May)

Images which focus on weather as a phenomenon or the after effects of weather. Examples would include images of snow, ice, fog or storms. PLEASE consider photographer safety when pursuing these images.

Music (June)

Images which include musical components. These components could include musical imagery, performers, instruments or the like.

Graffiti (July)

Images where the subject is unauthorized, non-commissioned artwork commonly referred to as graffiti and viewable from a public setting. Please note that murals are specifically excluded from this topic. It is NOT enough to simply have graffiti in the image—the graffiti must be the subject of the image.

Madison County (August)

Images taken in or focusing on Madison County, KY. NOTE: images for this contest MUST be taken between July 1, 2019 and the date of the contest submission. No archive or catalog images should be submitted.

Fairs and Festivals (October)

Images taken involving organized fairs or festivals. This can include everything from a small festival to an organized event such as the State Fair.

Sports And Recreation– Any recreational activity.

Photo-Journalism –Story-telling photographs of “Man and Man’s Environment.” This category includes documentary, contemporary life, illustrative, news and human interest. Special emphasis is given to life in our world.

Architecture – Any man-made building or structure or part thereof.

CREATIVE -- An image whose origin is a photograph (or photographs) captured in-camera, then manipulated digitally in image editing software without limitation. Included will be images manipulated using creative filters provided in Photoshop or via various 3rd party plug-ins, composite images representing the combining of two or more photographs and images resulting from the use of “actions” within the digital image processing step that may morph the original image(s) into something that bears little resemblance to the original. All parts of the image must be the work of the photographer.

BIRDS: Any image in which birds are the primary subject.

ABANDONED: Images of assumedly abandoned or left-behind objects, buildings or areas. Photographers are especially encouraged to be cognizant of the issues of safety, permissions and trespass with this category.

Wild Card: Eyes

The LASC will handle all print sales and will take a 30% commission. Please keep that in mind as you decide how to price your work. Information about the print show rules, etc. are available on the camera club website (www.creativecameraclub.org) under “Compete” and then “Print Competition Rules.” For additional questions, please contact John Snell (859.229.6033) or any members of the board.

Photographic Visualization and Developing Your Personal Creativity.

October 19th from 9 to 5. Ansel Adams said it best when he said "the single most important component of a camera is the 12 inches behind it." This class, taught as part of the Professional Photographers of America super one day class series will focus on photographic visualization and developing your personal creativity. We'll look at visualization from a historical point of view and talk about how we can translate that into our own daily photographic work. Along the way we will explore a series of exercises to help you develop your own creativity and find your unique artistic vision. Register online at ppa.com and click on the super one day class Banner.

Officers

President

Tom Myers

Vice President

Parham Baker

Secretary

Jan McKinney

Treasurer

Ken Graulich

Newsletter Editor

Kathy Davis

Past President

John Snell

Board of Directors

Jack McKinney

Bill Cole

Ward Ransdell

For information or questions:

info@creativecameraclub.org

The Creative Camera Club (CCC) can trace its roots back to the Lexington Camera Club of 1930s. We welcome anyone interested in the art and science of photography from amateur to professional.

2019 Calendar

January

- 3 Petting Zoo
- 17 Philippe : Dog Photography
- 18 Gallery Hop and Reception

February

- 7 First Thursday: Close up Workshop
- 17 Competition Submission Closes
- 21 Competition, 7:00: Long Exposure Critique: Bill Cole MSS: Jan McKinney and Bill Cole

March

- 7 First Thursday: Lighting Workshop
- 21 Regular Meeting:Walt Roycraft- Reflections on Architectural Photography
MSS: Jeff Lackey

April

- 4 First Thursday: Light Painting Workshop
- 14 Competition Submission Closes
- 18 Competition: Shadows Critique:Terry Bailey
- 24 Submission Closes for the Insect Photo Salon

May

- 2 First Thursday: Downtown Street Photography
- 16 Regular Meeting

June

- 6 First Thursday: Arboretum Photoshoot
- 16 Competition Submission Closes
- 20 Competition: Backlighting

July

- 18 Mike Matthews- Macro, Insect Salon,Meet , Greet and Eat
- 19 Galley Hop, Christ Church
- 25-28 Blue Ridge Parkway Trip

August

- 1 First Thursday: Stretching your creative vision
- 11 Competition Submission Closes Light Painting
- 15 Competition: Critique - Parham Baker

September

- 5 First Thursday-Jacobson Park picnic 5:45
- 19 Regular Meeting-Tom Fielder

October

- 3 First Thursday:Print Show Preparation
- 13 Competition Submission Closes: Candid People
- 17 Competition: Critique - Terry Bailey, Elections

November

- 9 Print Show Entry
- 14 Regular Meeting: Judging
- 15 Gallery Hop

December

- 16 Christmas Party - Fasig Tipton